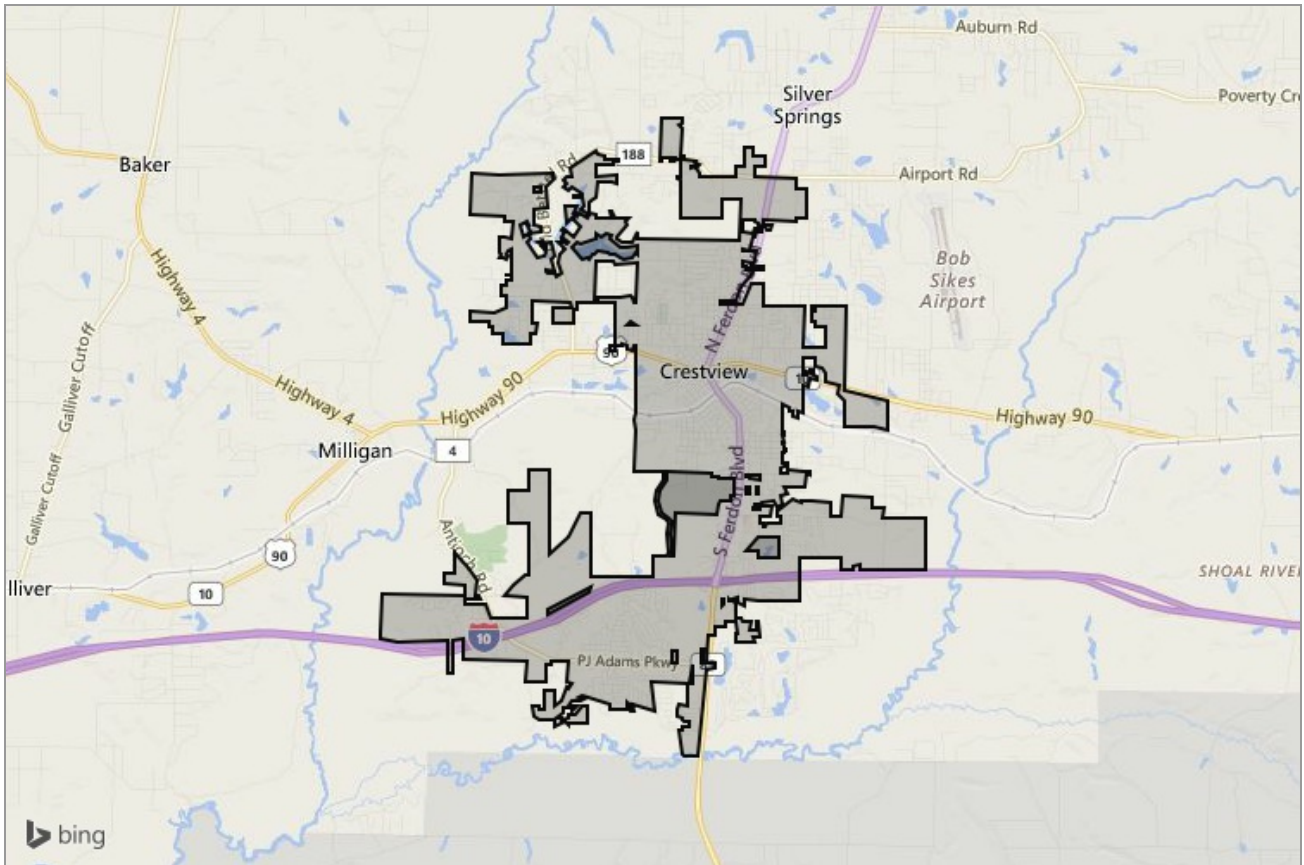




NEIGHBORHOOD REPORT

# Crestview, Florida



Presented by

**Christine Gray**

Florida Real Estate License: 3358792

Work: (850) 937-7253 | Fax: (850) 279-4823

[www.shuttersrealestate.com](http://www.shuttersrealestate.com)

Keller Williams - Niceville  
Niceville, FL 32578



# Neighborhood: Housing Stats and Charts

	Crestview	Okaloosa County	Florida	USA
Median Estimated Home Value	\$142K	\$190K	\$187K	\$319K
Estimated Home Value 12-Month Change	+3.4%	+3.9%	+10.7%	–
Median List Price	\$196K	\$270K	\$230K	\$95K
List Price 1-Month Change	+0.5%	+0.5%	0%	-3.6%
List Price 12-Month Change	+16.7%	+14.8%	+10%	–
Median Home Age	24	30	32	–
Own	61%	65%	66%	64%
Rent	39%	35%	34%	36%
\$ Value of All Buildings for which Permits Were Issued	–	\$122M	\$7.82B	\$102B
% Change in Permits for All Buildings	–	+33%	+13%	+2%
% Change in \$ Value for All Buildings	–	+55%	+15%	+7%

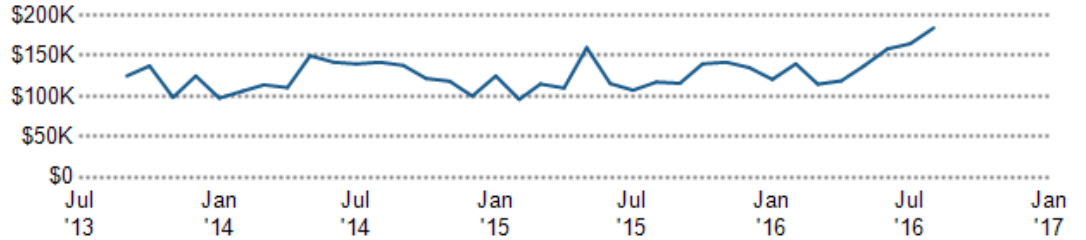
## Median Sales Price vs. Sales Volume

This chart compares the price trend and sales volume for homes in an area. Home prices typically follow sales volume, with a time lag, since sales activity is the driver behind price movements.

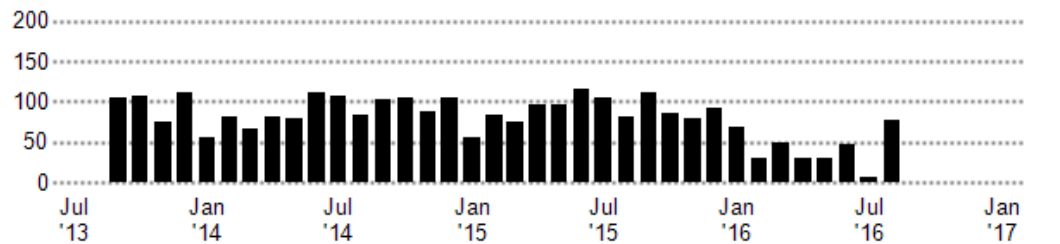
Data Source: Public records data  
Update Frequency: Monthly

- Median Sales Price
- Sales Volume

Median Sales Price



Sales Volume





## Median Listing Price vs. Listing Volume

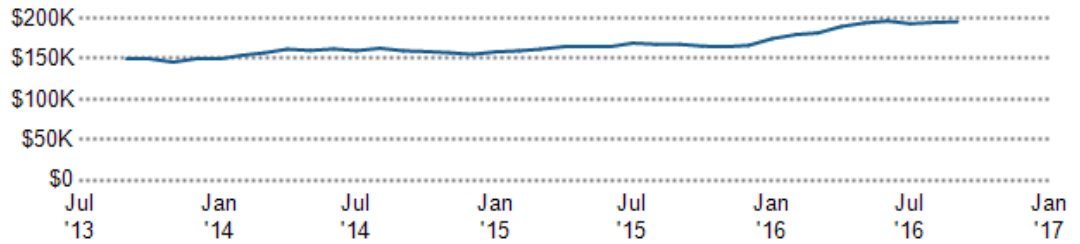
This chart compares the listing price and listing volume for homes in an area. Listing prices often follow listing volume, with a time lag, because supply can drive price movements.

Data Source: On- and off-market listings sources

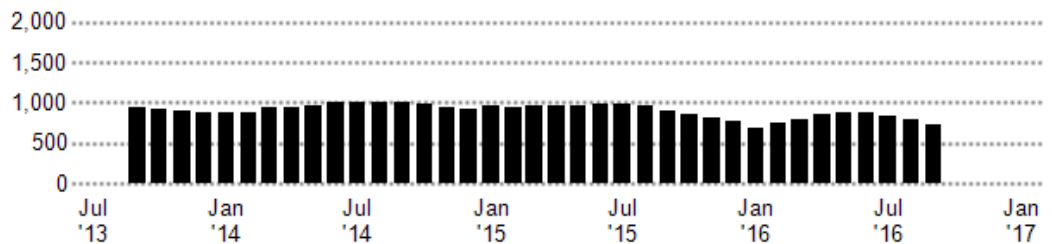
Update Frequency: Monthly

■ Median List Price  
■ Listing Volume

### Median List Price



### Listing Volume



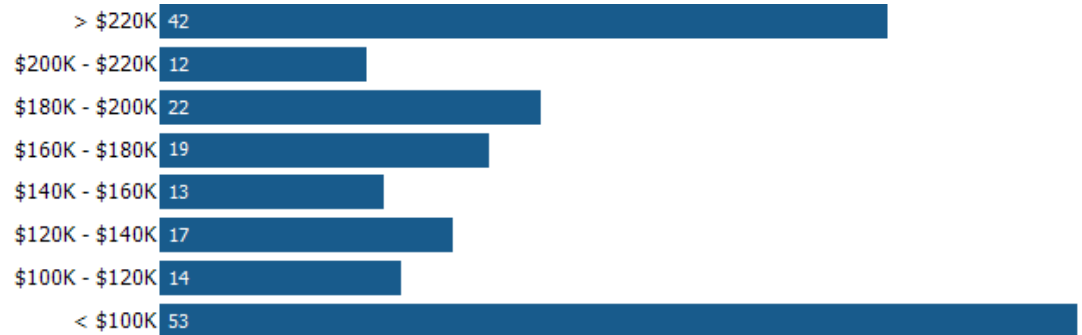
## Price Range of Homes Sold

This chart shows the distribution of homes reported sold in the past six months within different price ranges in the area of your search. The amount shown for the subject property is sold data where available, or the property's estimated value when sales data are unavailable (such as a non-disclosure state) or provided in range format.

Data Source: Public records data

Update Frequency: Monthly

■ Sales Count By Price Range



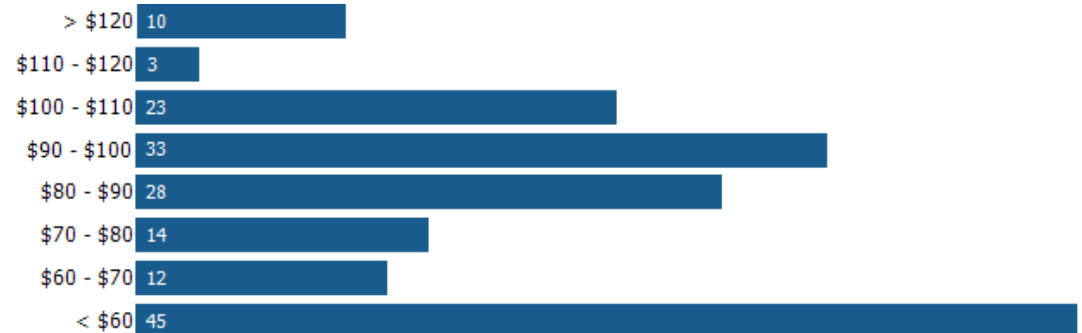
## Price per Square Foot of Homes Sold

This chart shows the distribution of homes reported sold in the past six months at different prices per square foot (living area sourced from public records).

Data Source: Public records and MLS data where licensed

Update Frequency: Monthly

■ Sales Count By Price Per Sq Ft





## Size of Homes Sold

This chart shows the distribution of homes reported sold in the past six months of different sizes in the area of your search.

Data Source: Public records data

Update Frequency: Monthly

■ Sales Count By Living Area



## Age Range of Homes Sold

This chart shows the distribution of homes reported sold in the past six months of different age ranges in the area of your search.

Data Source: Public records data

Update Frequency: Monthly

■ Sales Count by Age of House



## Number of Bedrooms in Homes Sold

This chart shows the distribution of homes reported sold in the past six months, according to the number of bedrooms, in the area of your search.

Data Source: Public records data

Update Frequency: Monthly

■ Sales Count by Bedroom





# Neighborhood: People Stats and Charts

	Crestview	Okaloosa County	Florida	USA
Population	22.1K	189K	19.4M	314M
Population Density per Sq Mi	1.38K	203	361	—
Population Change since 2000	+49.1%	+10.8%	+21.1%	+11.6%
Median Age	31	37	41	37
Male / Female Ratio	52%	50%	49%	49%
High School Graduate	30%	27%	30%	28%
2-Year Degree	41%	36%	30%	29%
Bachelor Degree	14%	17%	17%	18%
Post-graduate Degree	6%	11%	10%	11%

## Population of Children by Age Group

This chart shows the distribution of the population of children by age range — from birth to 17 — in the area of your search.

Data Source: U.S. Census

Update Frequency: Annually

Crestview



## Population of Adults by Age Group

This chart shows the distribution of the population of adults by age range — from 18 to 75-plus — in the area of your search.

Data Source: U.S. Census

Update Frequency: Annually

Crestview



## Households With Children

This chart shows the distribution of households with children, categorized by marital status, in the area of your search.

Data Source: U.S. Census

Update Frequency: Annually

Crestview





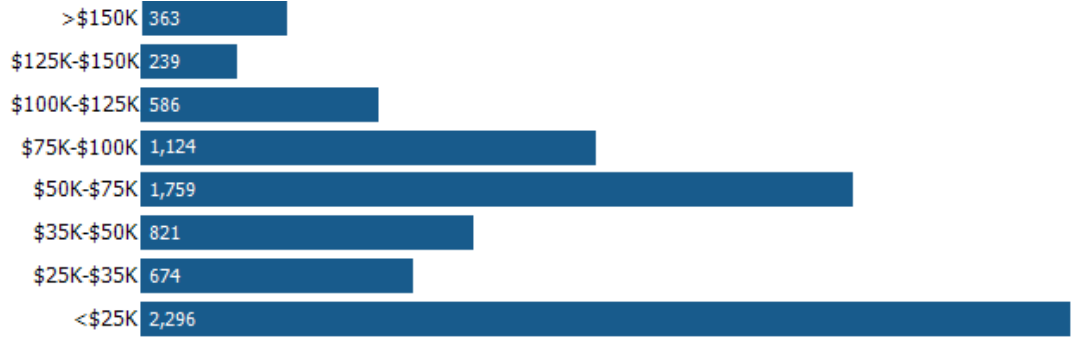
## Household Income Brackets

This chart shows annual household income levels within an area.

Data Source: U.S. Census

Update Frequency: Annually

■ Crestview



## Presidential Voting Pattern

This chart shows how residents of a county voted in the 2012 presidential election.

Data Source: USElectionAtlas.org

Update Frequency: Annually





# Neighborhood: Economic Stats and Charts

	Crestview	Okaloosa County	Florida	USA
Income Per Capita	\$21,525	\$29,082	\$26,499	\$28,555
Median Household Income	\$51,115	\$55,768	\$47,212	\$53,482
Unemployment Rate	–	4.1%	5%	5%
Unemployment Number	–	3.8K	490K	7.94M
Employment Number	–	89.4K	9.38M	152M
Labor Force Number	–	93.2K	9.87M	160M

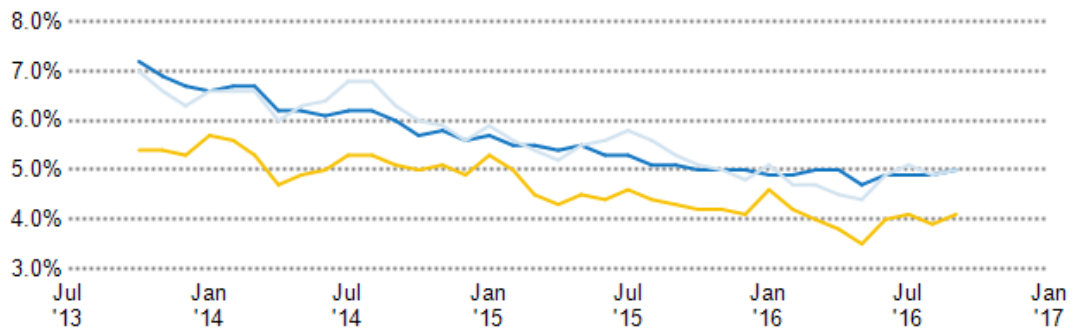
## Unemployment Rate

This chart shows the unemployment trend in the area of your search. The unemployment rate is an important driver behind the housing market.

Data Source: Bureau of Labor Statistics

Update Frequency: Monthly

- Okaloosa County
- Florida
- USA



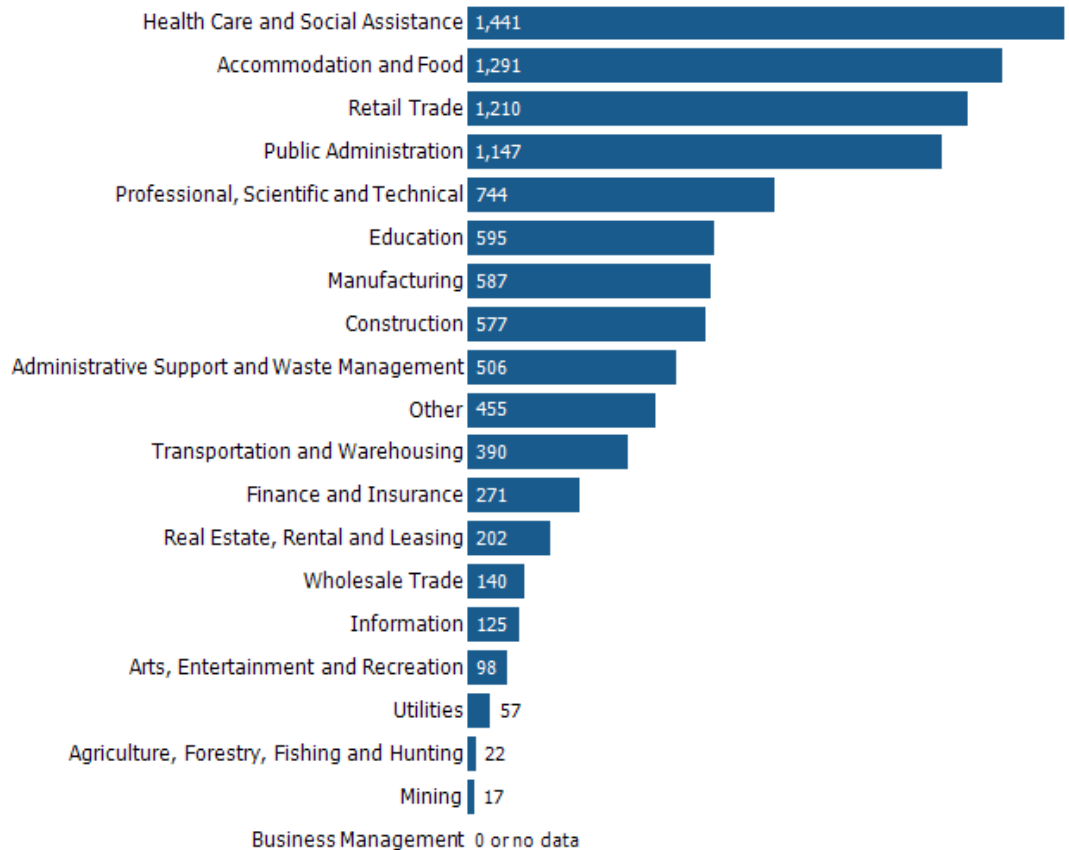
## Occupational Categories

This chart shows categories of employment within an area.

Data Source: U.S. Census

Update Frequency: Annually

- Crestview





# Neighborhood: Quality of Life Stats and Charts

## Quality of Life in 32536

	Crestview	Okaloosa County	Florida	USA
Elevation (in feet)	154	140	-	-
Annual Rainfall (in inches)	60	60	56.46	-
Annual Snowfall (in inches)	0	0.12	0.06	-
Days of Full Sun (per year)	113	113	98	-
Travel Time to Work (in minutes)	26	23	26	26
Water Quality - Health Violations	-	0.81	-	-
Water Quality - Monitoring and Report Violations	-	0.19	-	-
Superfund Sites	0	0	85	2,302
Brownfield Sites	No	Yes	Yes	Yes

### Average Commute Time

This chart shows average commute times to work, in minutes, by percentage of an area's population.

Data Source: U.S. Census

Update Frequency: Annually

Crestview



### How People Get to Work

This chart shows the types of transportation that residents of the area you searched use for their commute.

Data Source: U.S. Census

Update Frequency: Annually



### Average Monthly Temperature

This chart shows average temperatures in the area you searched.

Data Source: NOAA

Update Frequency: Annually

